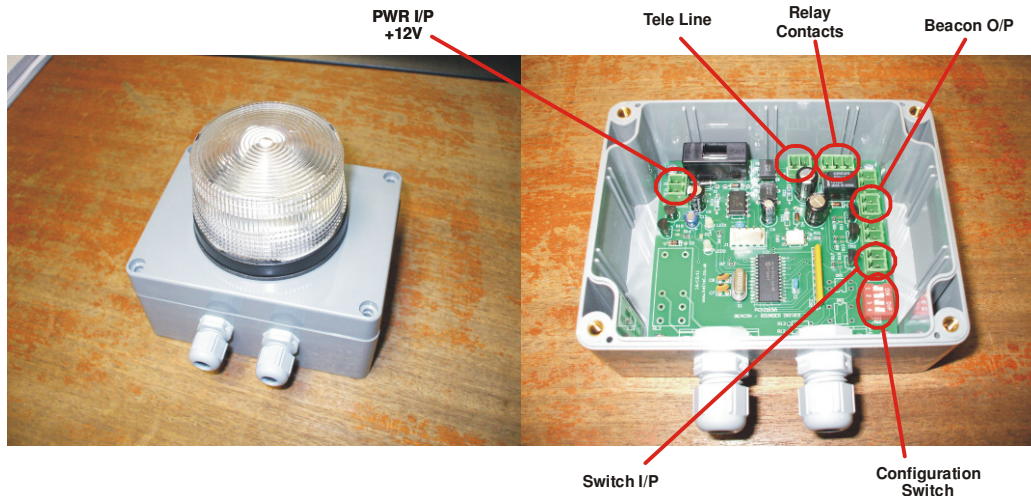


AS2761 Telephone Alert Beacon –

When a call is activated from the AS2710 Hotline 6, the Telephone Alert Beacon (AS2761) can be added in parallel with the remote telephone. This will give a visual display to show that an active call is in progress. When a call is in progress the Relay output is switched ON until the call has cleared or has been answered.



Mode 1 – The beacon will activate when a call is in progress. If the call is answered the beacon will continue to light until the Switch Input has been shorted.

Mode 2 – The beacon is timed in this mode, when the call has cleared the beacon will light for a further 4 seconds before switching off. If the call is answered the beacon will clear straight away.

| LED Sequence | |
|---------------|--|
| LED1 | |
| Pulsing GREEN | Idle, Line connected |
| Solid GREEN | Line disconnected or Call Answered (depends on LED2) |
| Pulsing RED | N/A |
| Solid RED | Incoming Ringing |
| | |
| LED2 | |
| Pulsing GREEN | Idle, Line connected |
| Solid GREEN | Call Answered by lifting Phone Off Hook |
| Pulsing RED | Ringing In, Lamp follows ring cadence |
| Solid RED | N/A |

| Configuration Switches | | |
|------------------------|------------------|---|
| | OFF | ON |
| SW1 | Switch Input OFF | Beacon ON until Switch pressed |
| SW2 | Timed Beacon OFF | Timed Beacon (clears after 4s no ringing) |
| SW3 | Unused | Unused |
| SW4 | Unused | Unused |